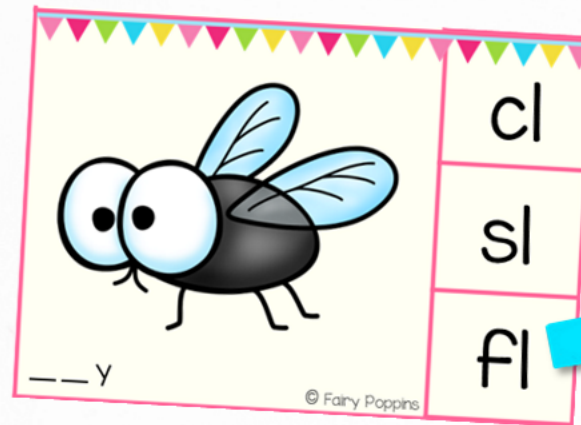
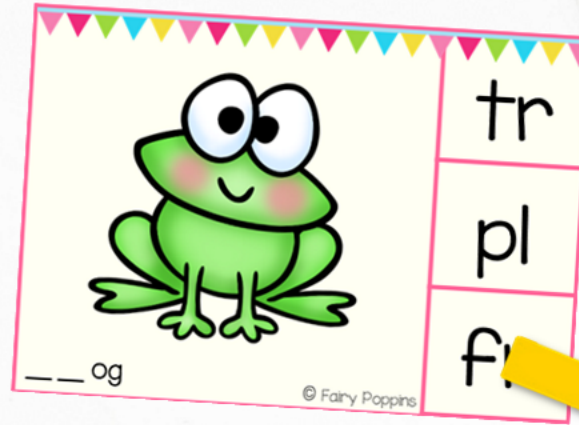
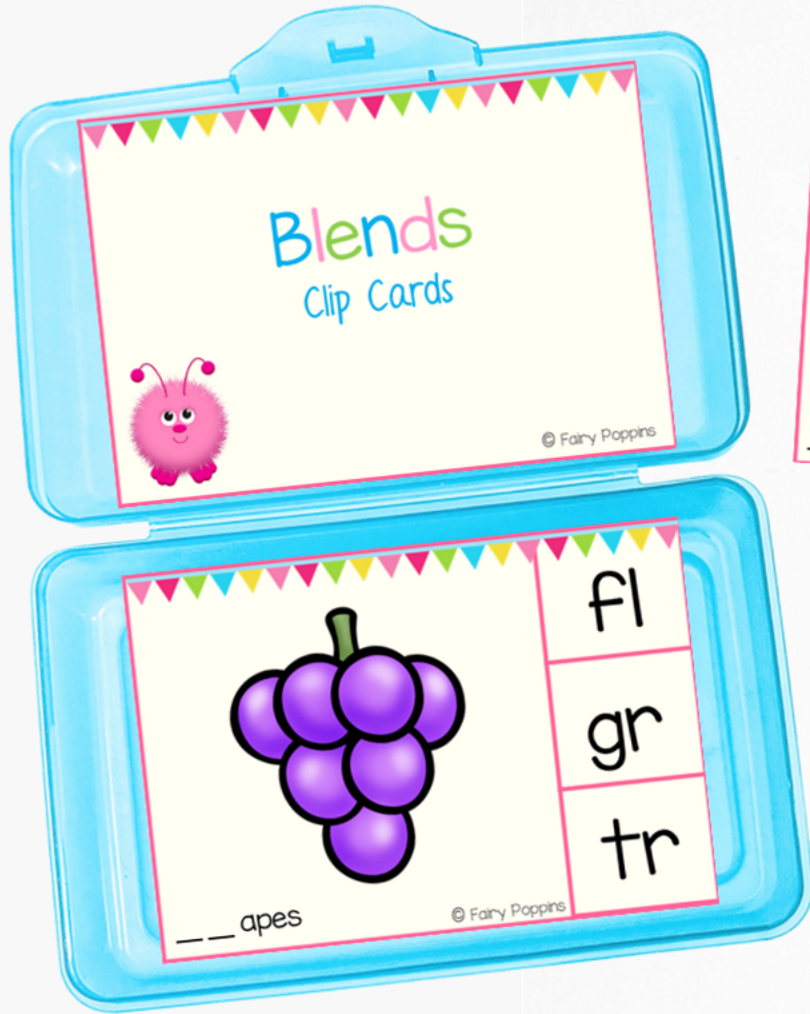


# BLEND

## CLIP CARDS



Thank you so much for supporting Fairy Poppins. It brings me great joy to create resources that are helpful to you and your students.  
Happy teaching! Rosey

Did you know I have a blog with additional freebies and resources?

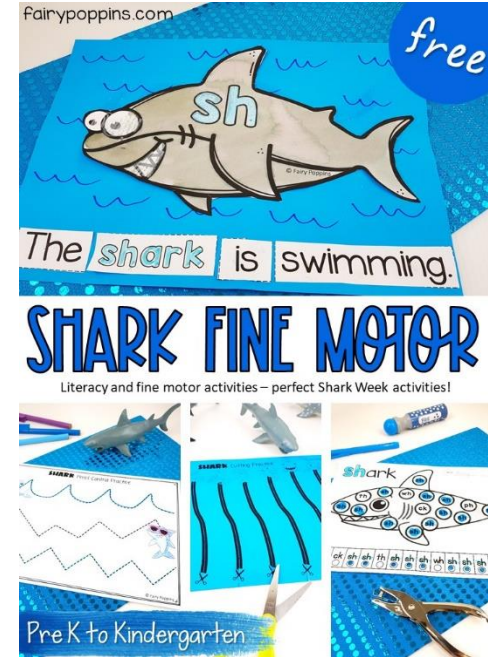
[fairypoppins.com](http://fairypoppins.com)

★ [Follow Me](#) on TpT and join my email list to receive updates!



## Questions, Concerns or Technical Help

Please contact me [here](#) via the Q & A section of my TpT store.



## Credits



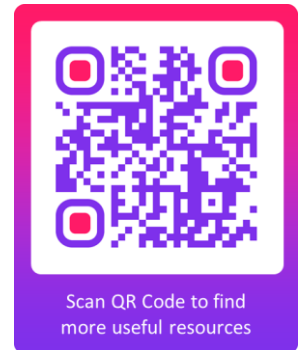
# Terms of Use

- You are entitled to a single user license to use this copyrighted resource for teaching purposes in your classroom. This includes special permission for distance learning, if it is accessible to only your students or their parents via a password secured login (i.e. Google Classroom, Seesaw, Boom Learning).
- Please do not share this resource on any shared drive or other online platform accessible to people other than yourself or your co-teacher if sharing a class (i.e. School shared drive, Facebook groups, Reddit, Wiki site, virtual hangouts for teachers to name a few).
- If a friend or colleague who is not co-teaching your students requests to use this resource, and you have not purchased a multiple user license, please direct them to my TpT store to purchase their own copy.
- You may not resell / redistribute / recreate / use or share this resource (or the graphics) in whole or in part for any reasons.
- This resource is copyright protected under the Digital Millennium Act.
- You can share photos of my resources in action on Instagram by tagging me @fairypoppinsdotcom.

# Instructions

- Print and laminate the clip cards for added durability.
- Choose a card, say the sound and place a clothes pin on the answer.
- Continue playing until all of the cards have been completed.

# My Blog



# Other Resources You May Like

Click on the pictures to find out more.

fairypoppins.com

sn Name \_\_\_\_\_

1. Trace sn

sn sn sn sn sn

2. Write sn. Then draw a line from the picture to the matching word.

snore

snail

snip

sl Name \_\_\_\_\_

1. Trace sl

sl sl sl sl sl

2. Add sl to make these words.

sled pig slide

slipper snail

3. Find these words.

slope sleep  
slant slim  
soft sleeve  
slip

L	H	A	E	L	S	M
S	L	E	E	V	A	L
L	O	P	I	L	S	N
I	H	M	A	E	N	T
M	S	L	O	P	E	C

Blends Book

Name \_\_\_\_\_

## BLENDS WORKBOOK

These phonics worksheets help kids learn about beginning blends.

### BLENDS PHONICS POSTERS

sp

spoon spider

spaceship sponge

Fairy Poppins

### BLENDS HIGHLIGHT & HOLE PUNCH

My Blends Book

By \_\_\_\_\_

sp

Highlight all the sp. Name \_\_\_\_\_

spaceship sponge

spade spot

in the pictures that begin with sp

Fairy Poppins

### ENDING BLENDS PHONICS WORKBOOK

ik

Ending Blends Book

Fairy Poppins

### CCVC Words

Literacy Center

ship

drum

drop

chip

crab

crib

club

CCVC Words

CCVC Words

CCVC Words

CCVC Words

Fairy Poppins

# Blends

## Clip Cards



© Fairy Poppins



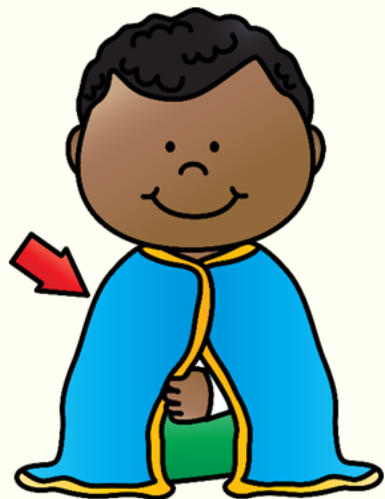
\_\_\_ ocks

© Fairy Poppins

bl

cl

br



\_\_\_ anket

© Fairy Poppins

bl

cl

br



\_\_\_ othes

© Fairy Poppins

sl

bl

cl



\_\_ \_ ean

© Fairy Poppins

sl

cl

cr



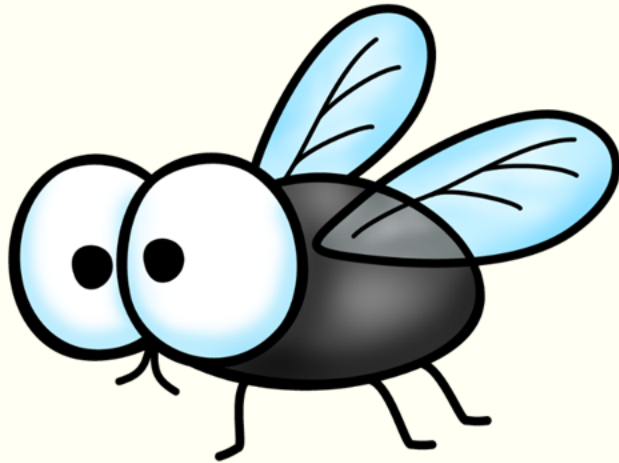
\_\_ \_ ower

© Fairy Poppins

pl

fl

cl



\_\_ \_ y

© Fairy Poppins

cl

sl

fl



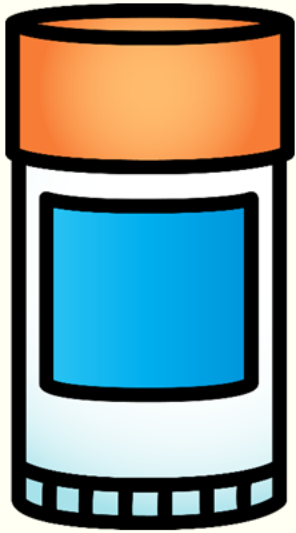
\_\_ \_ asses

© Fairy Poppins

sl

gl

fl



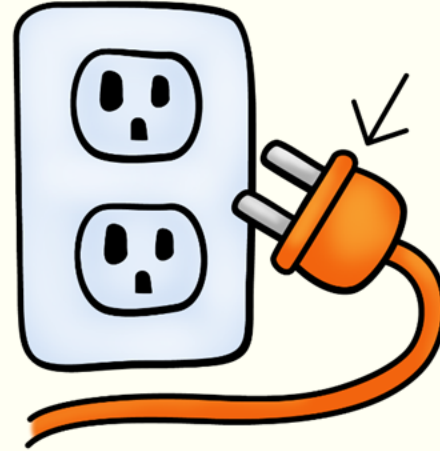
\_\_ ue

© Fairy Poppins

sl

gl

fl



\_\_ ug

© Fairy Poppins

cl

gl

pl



\_\_ ant

© Fairy Poppins

fl

pl

fr



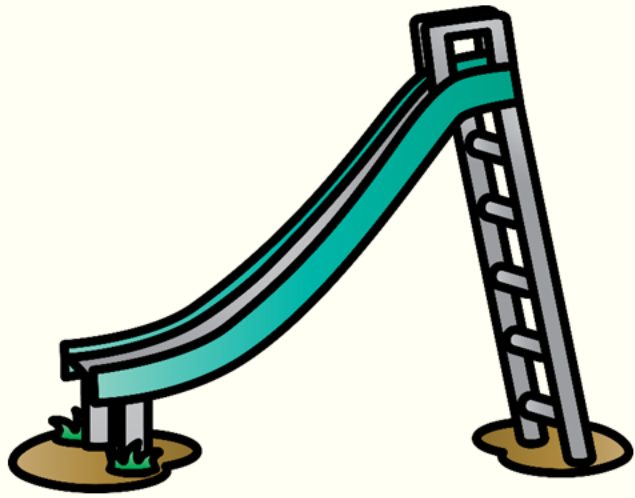
\_\_ eep

© Fairy Poppins

gr

sl

gl



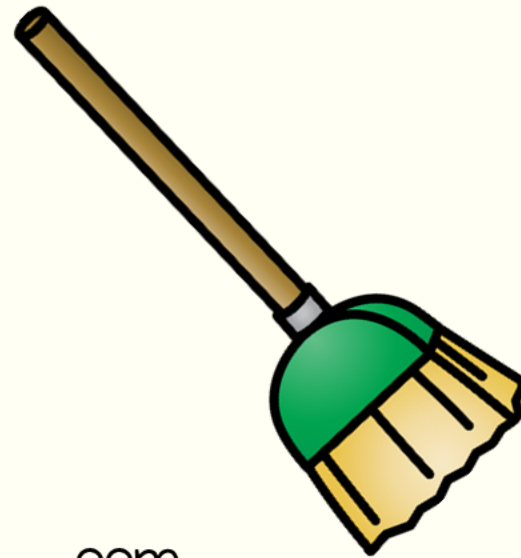
\_\_ \_ ide

© Fairy Poppins

pl

sw

sl



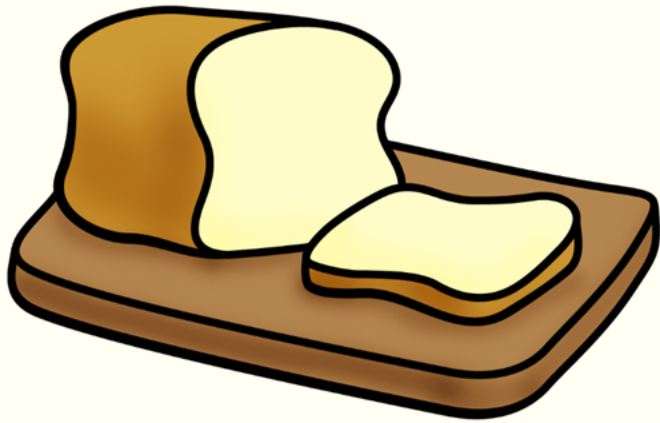
\_\_ \_ oom

© Fairy Poppins

fl

br

pl



\_\_ \_ ead

© Fairy Poppins

sw

tr

br



\_\_ \_ own

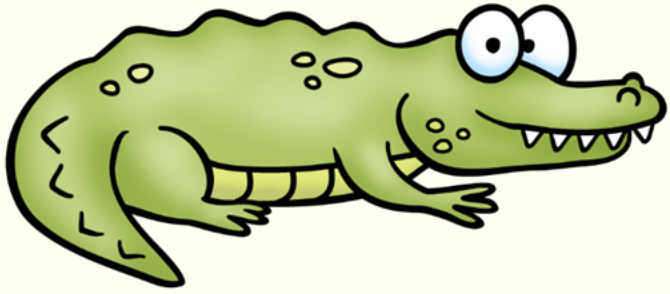
© Fairy Poppins

cr

pl

br





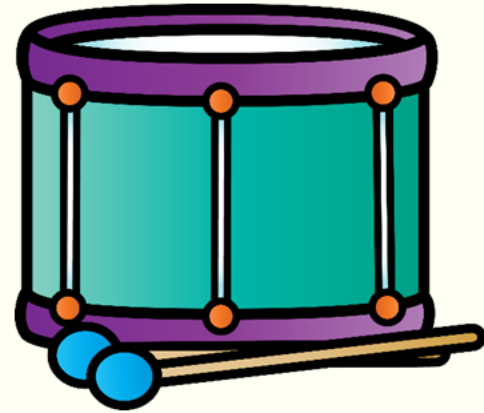
\_\_ \_\_ ocodile

© Fairy Poppins

br

fr

cr



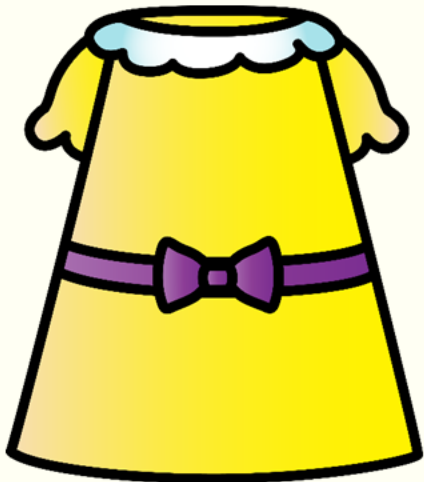
\_\_ \_\_ um

© Fairy Poppins

dr

pr

br



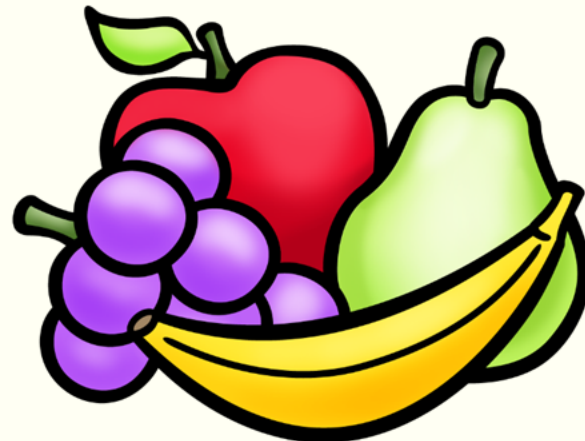
\_\_ \_\_ ess

© Fairy Poppins

dr

tr

br



\_\_ \_\_ uit

© Fairy Poppins

gl

cr

fr



\_\_ \_\_ og

© Fairy Poppins

tr

pl

fr



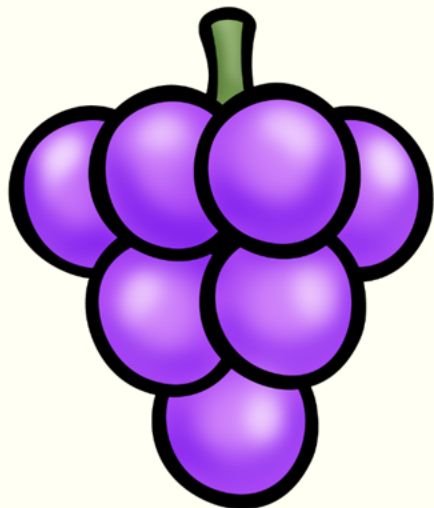
\_\_ \_\_ ass

© Fairy Poppins

gr

gl

dr



\_\_ \_\_ apes

© Fairy Poppins

fl

gr

tr



\_\_ \_\_ esent

© Fairy Poppins

pl

tr

pr



\_\_ \_\_ inter

© Fairy Poppins

pl

pr

sl



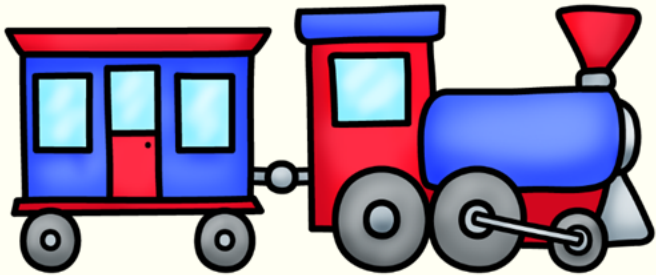
\_\_ \_\_ ee

© Fairy Poppins

tr

sl

tw



\_\_ \_\_ ain

© Fairy Poppins

pr

dr

tr



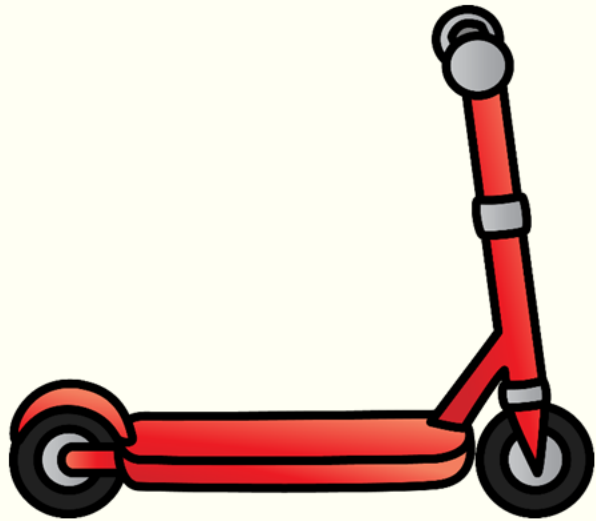
\_\_ \_\_ arf

© Fairy Poppins

cr

sl

sc



\_\_ ooter

© Fairy Poppins

sl

fr

sc



\_\_ unk

© Fairy Poppins

tr

sl

sk



\_\_ i

© Fairy Poppins

pr

sk

sl



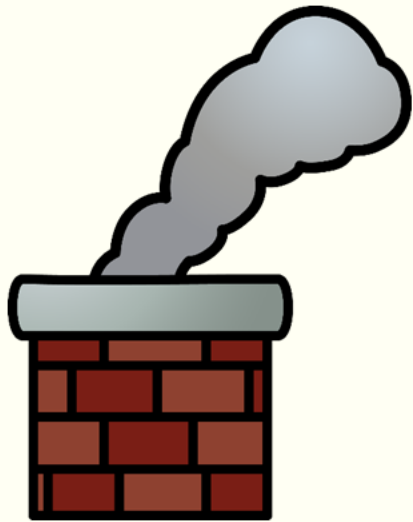
\_\_ ell

© Fairy Poppins

tr

sm

cl



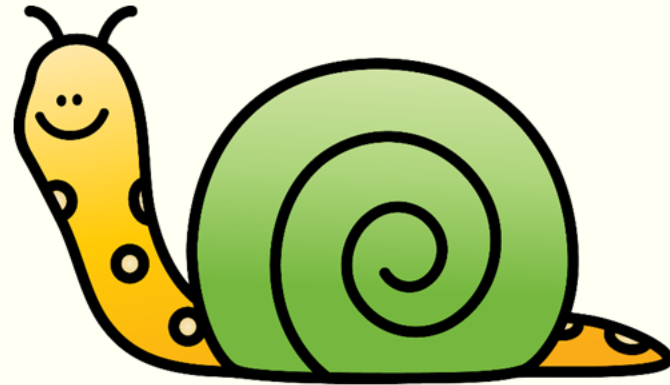
\_\_\_ oke

© Fairy Poppins

dr

sm

br



\_\_\_ ail

© Fairy Poppins

sn

sl

cr



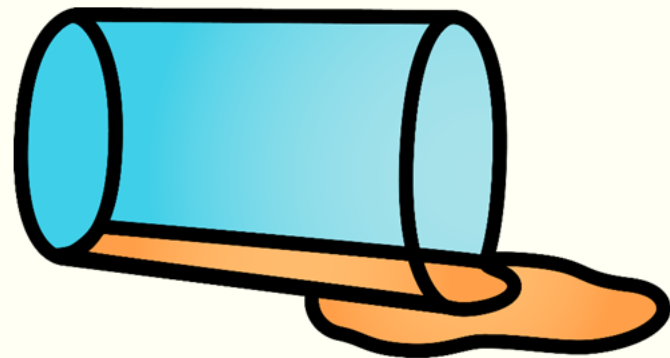
\_\_\_ ack

© Fairy Poppins

sn

sk

sl



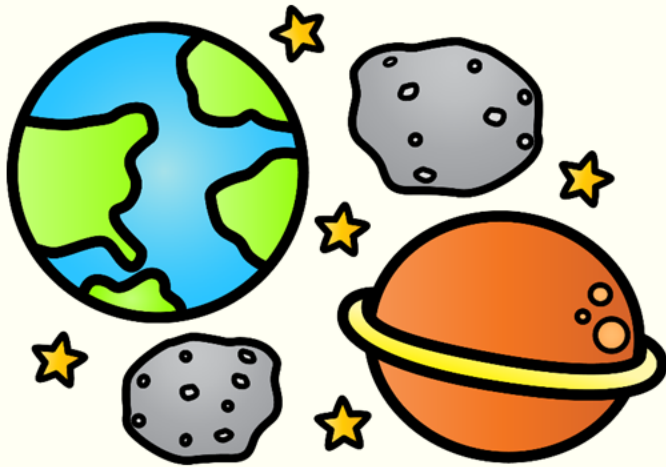
\_\_\_ ill

© Fairy Poppins

dr

sp

fl



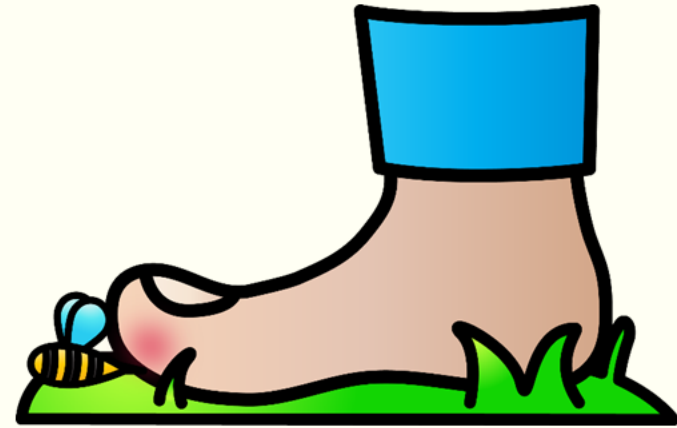
\_\_\_ ace

© Fairy Poppins

dr

sp

cl



\_\_\_ ing

© Fairy Poppins

sn

sl

st



\_\_\_ orm

© Fairy Poppins

st

gl

sw



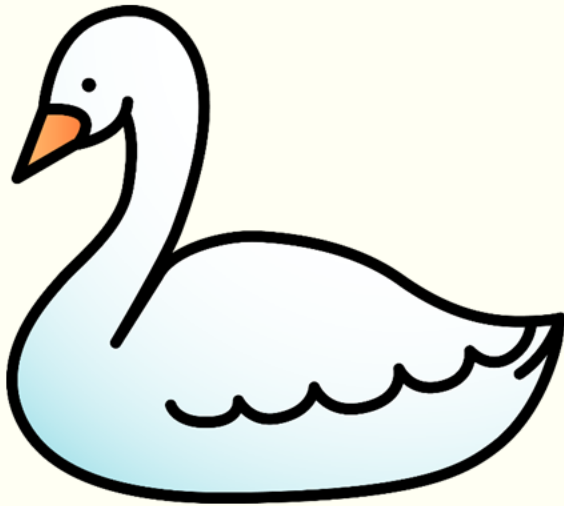
\_\_\_ eep

© Fairy Poppins

dr

tw

sw



\_\_ \_ an

© Fairy Poppins

dr

sp

sw



\_\_ \_ elve

© Fairy Poppins

sn

tw

sw



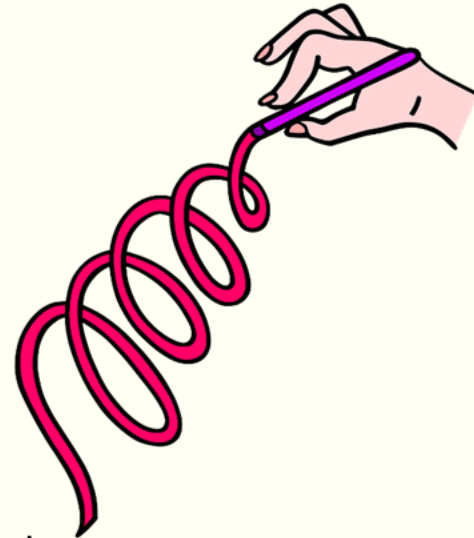
\_\_ \_ ins

© Fairy Poppins

tw

sl

gr



\_\_ \_ irl

© Fairy Poppins

dr

tw

sw