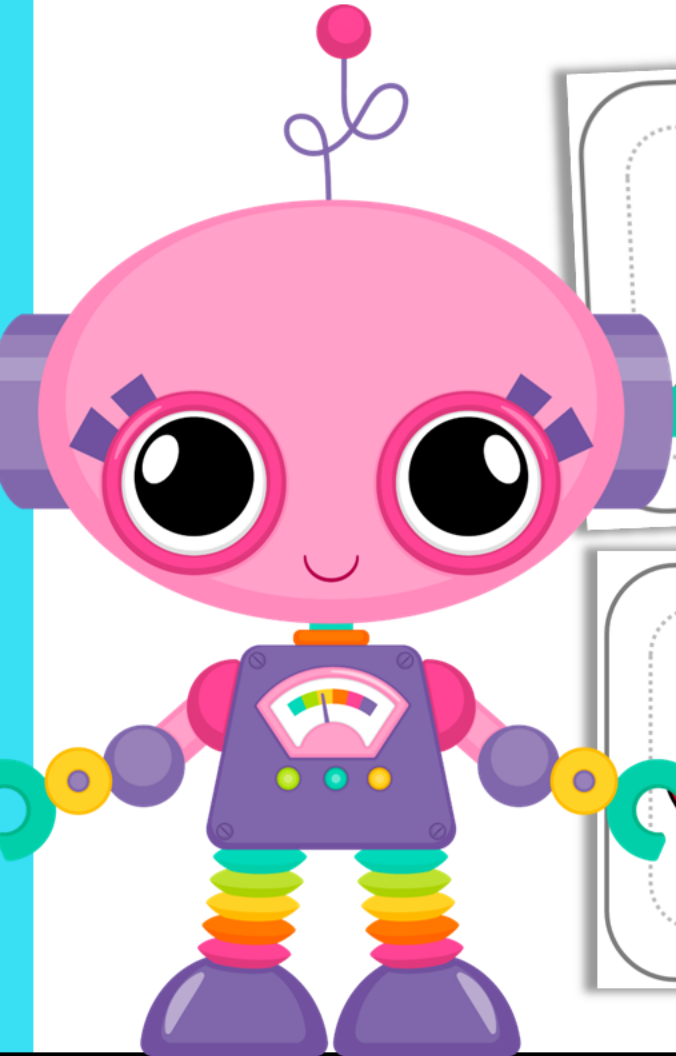


RHYMING

ROBOT MATS



dig

web

© Fairy Poppins

Place a peg on the picture that rhymes with dig.

red

mop

© Fairy Poppins

Place a peg on the picture that rhymes with red.



Thank you so much for supporting Fairy Poppins. It brings me great joy to create resources that are helpful to you and your students.
Happy teaching! Rosey

Did you know I have a blog with additional freebies and resources?

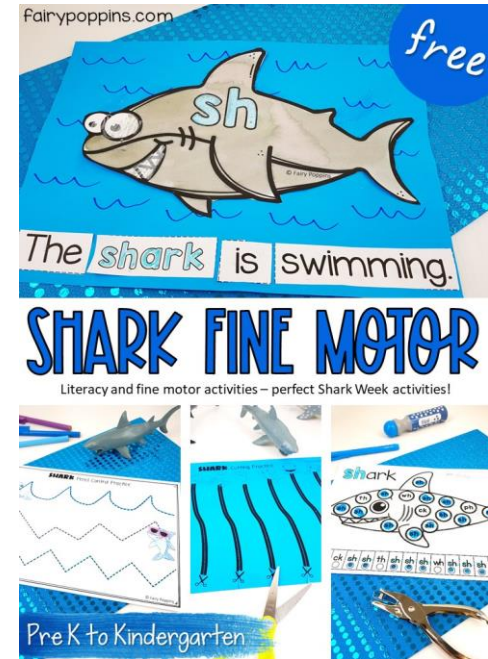
fairypoppins.com

★ [Follow Me](#) on TpT and join my email list to receive updates!



Questions, Concerns or Technical Help

Please contact me [here](#) via the Q & A section of my TpT store.



Credits



MyCuteGraphics



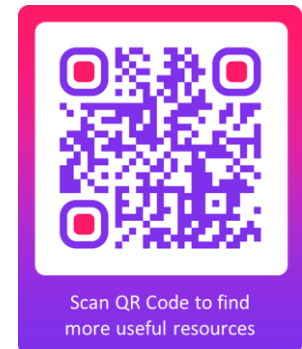
Terms of Use

- You are entitled to a single user license to use this copyrighted resource for teaching purposes in your classroom. This includes special permission for distance learning, if it is accessible to only your students or their parents via a password secured login (i.e. Google Classroom, Seesaw, Boom Learning).
- Please do not share this resource on any shared drive or other online platform accessible to people other than yourself or your co-teacher if sharing a class (i.e. School shared drive, Facebook groups, Reddit, Wiki site, virtual hangouts for teachers to name a few).
- If a friend or colleague who is not co-teaching your students requests to use this resource, and you have not purchased a multiple user license, please direct them to my TpT store to purchase their own copy.
- You may not resell / redistribute / recreate / use or share this resource (or the graphics) in whole or in part for any reasons.
- This resource is copyright protected under the Digital Millennium Act.
- You can share photos of my resources in action on Instagram by tagging me @fairypoppinsdotcom.

Instructions

- Print on cardstock or laminate for durability. Then cut the robot rhyming mats in half.
- Point to the picture on the left side of the mat and say what it is. Then and ask the kids which words rhyme with it. For example, “Which word rhymes with cat? Cat, fan or cat, hat?”.
- Place a peg on the picture that rhymes.

My Blog



Scan QR Code to find
more useful resources

Other Resources You May Like

Click on the pictures to find out more.

RHYMING WORKSHEETS

Rhyme Lines 1

Rhyming Words

Rhyme Detection 5

Fairy Poppins

Rhyming

74 Rhyming Pairs!

Fairy Poppins

RYHMING PUZZLES

Rhyming puzzles

cake

Fly

sky

tie

bin

Fairy Poppins

CVC RYHMING CLIP CARDS

CVC Rhyming Clip Cards

top

fin

56 TASK CARDS

Fairy Poppins

RYHMING CLIP CARDS

Rhyming Clip Cards

moon

cake

56 TASK CARDS

Fairy Poppins

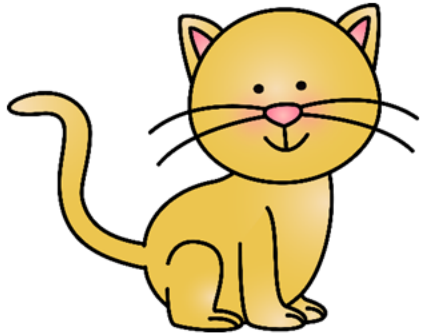
RHYMING ODD ONE OUT CLIP CARDS

Rhyming Odd One Out Clip Cards

What does not rhyme?

60 TASK CARDS

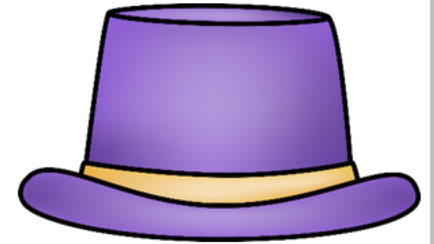
Fairy Poppins



cat



fan



hat

Place a peg on the picture that rhymes with cat.

© Fairy Poppins



jam



top



ram

Place a peg on the picture that rhymes with jam.

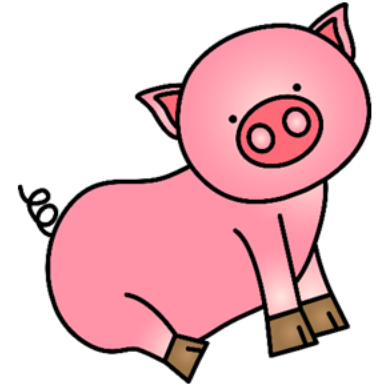
© Fairy Poppins



dig



web



pig

Place a peg on the picture that rhymes with dig.

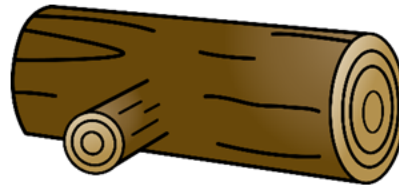
© Fairy Poppins



dog



log



pan

Place a peg on the picture that rhymes with dog.

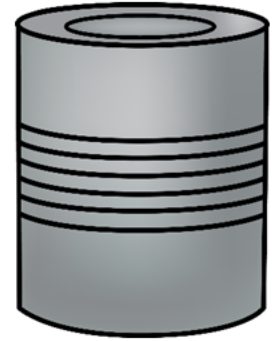
© Fairy Poppins



zip



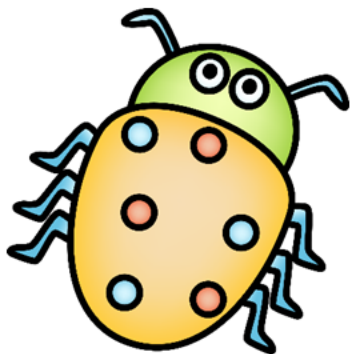
lip



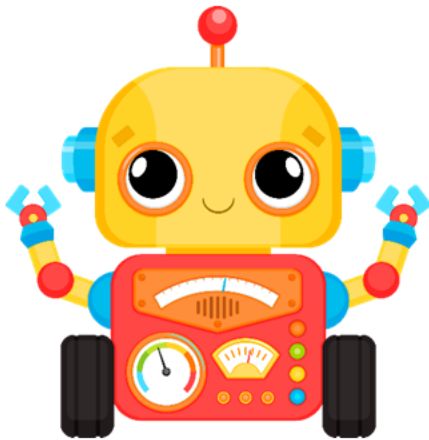
tin

Place a peg on the picture that rhymes with zip.

© Fairy Poppins



bug



bag



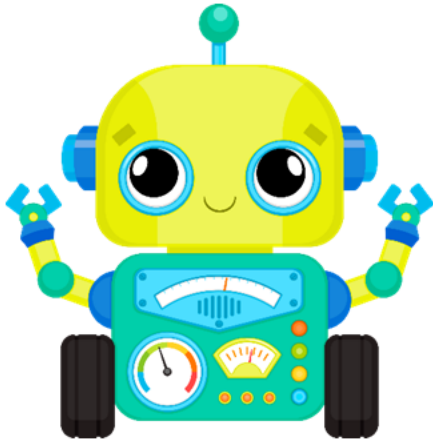
mug

Place a peg on the picture that rhymes with bug.

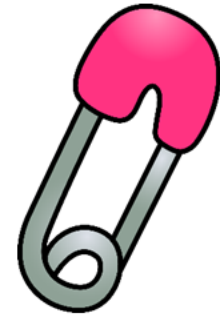
© Fairy Poppins



can



van



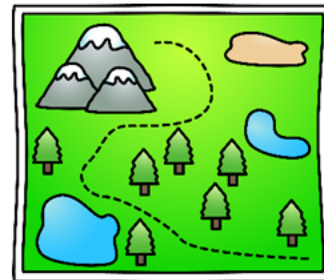
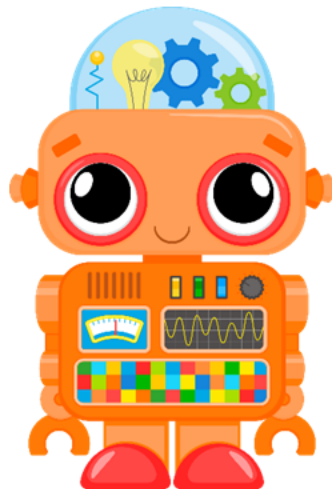
pin

Place a peg on the picture that rhymes with can.

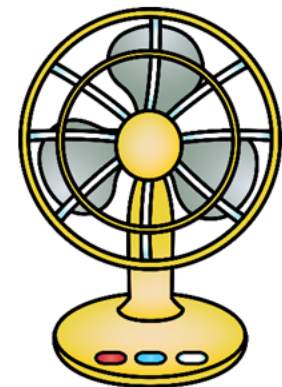
© Fairy Poppins



man



map



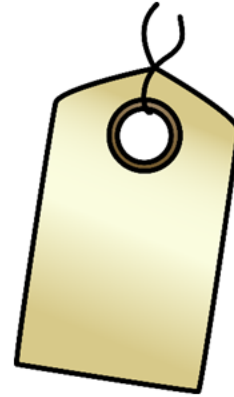
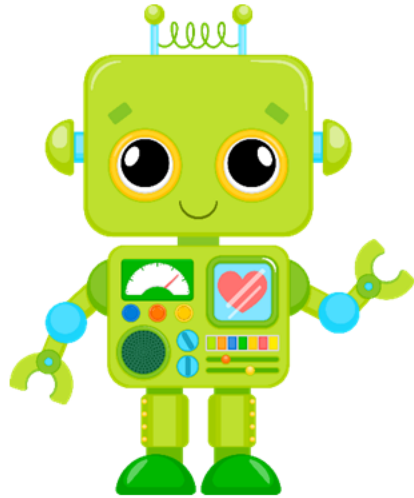
fan

Place a peg on the picture that rhymes with man.

© Fairy Poppins



cap



tag



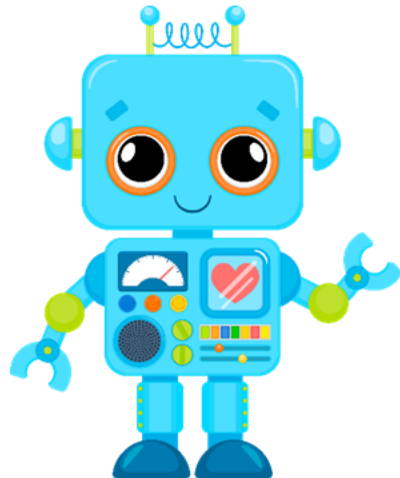
map

Place a peg on the picture that rhymes with cap.

© Fairy Poppins



red



bed



mop

Place a peg on the picture that rhymes with red.

© Fairy Poppins



mop



men



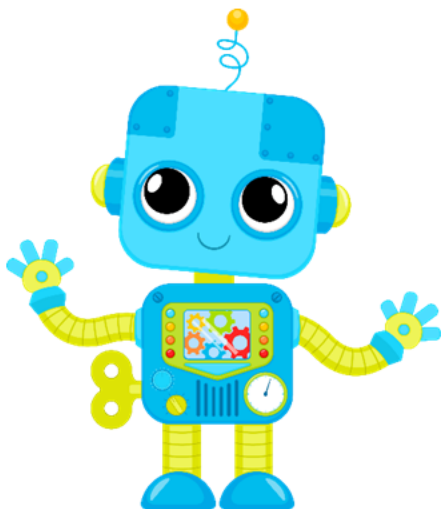
pop

Place a peg on the picture that rhymes with mop.

© Fairy Poppins



hen



pen



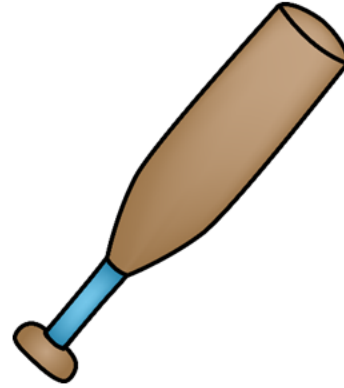
cab

Place a peg on the picture that rhymes with hen.

© Fairy Poppins



cut



bat



hut

Place a peg on the picture that rhymes with cut.

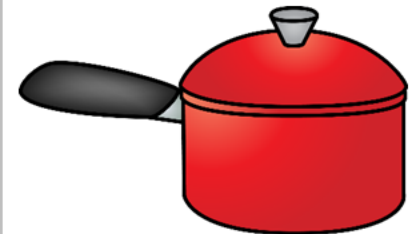
© Fairy Poppins



sun



run



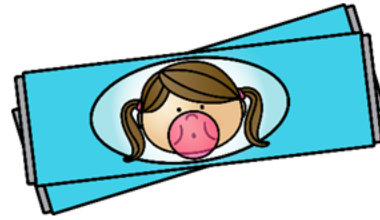
pot

Place a peg on the picture that rhymes with sun.

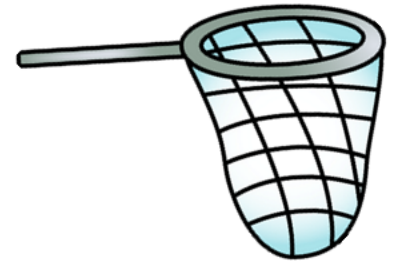
© Fairy Poppins



wet



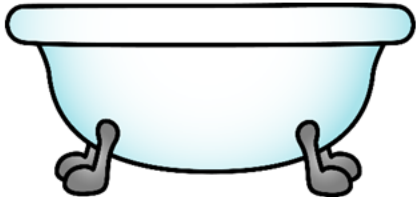
gum



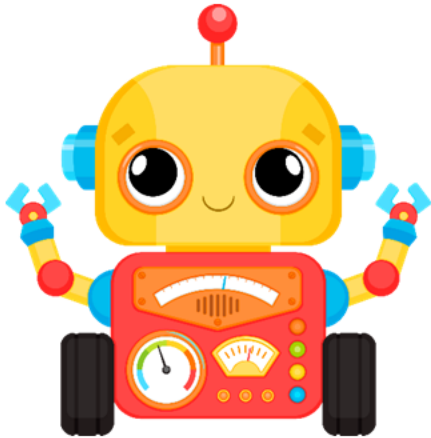
net

Place a peg on the picture that rhymes with wet.

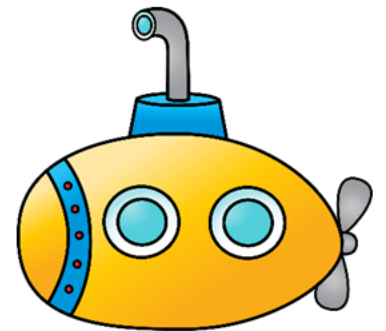
© Fairy Poppins



tub



bib



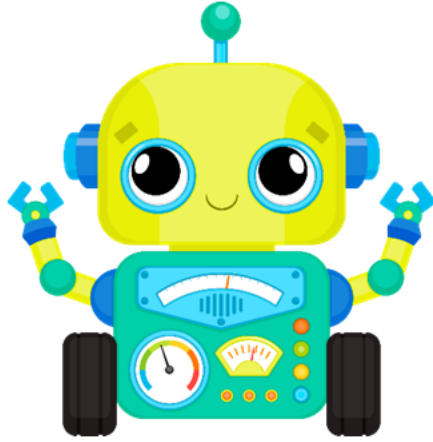
sub

Place a peg on the picture that rhymes with tub.

© Fairy Poppins



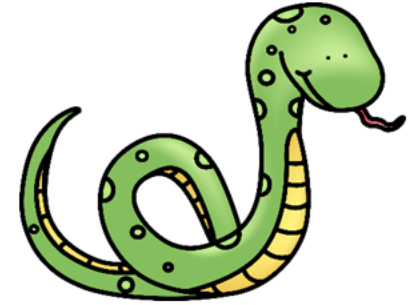
cake



coat

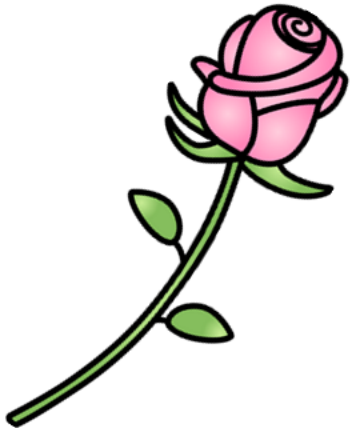


snake



Place a peg on the picture that rhymes with cake.

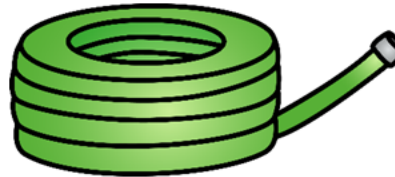
© Fairy Poppins



rose



hose

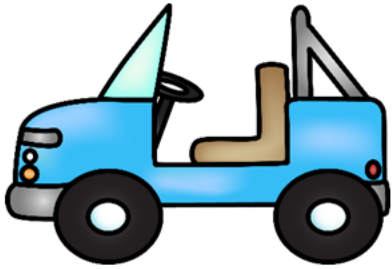


bike

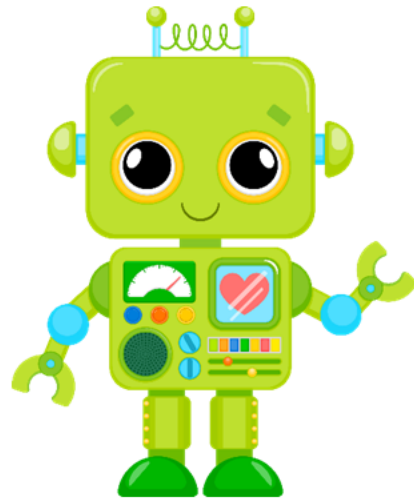


Place a peg on the picture that rhymes with rose.

© Fairy Poppins



jeep



sheep



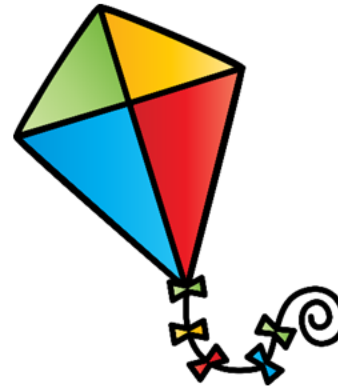
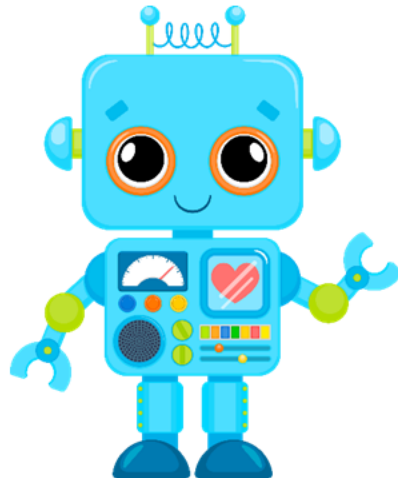
soap

Place a peg on the picture that rhymes with jeep.

© Fairy Poppins



key



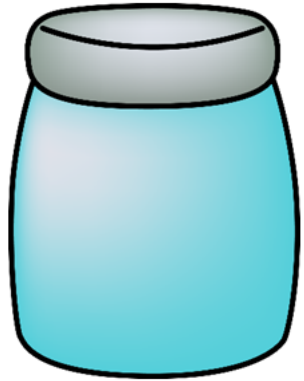
kite



tree

Place a peg on the picture that rhymes with key.

© Fairy Poppins



jar



jet



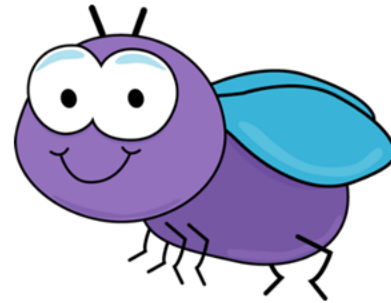
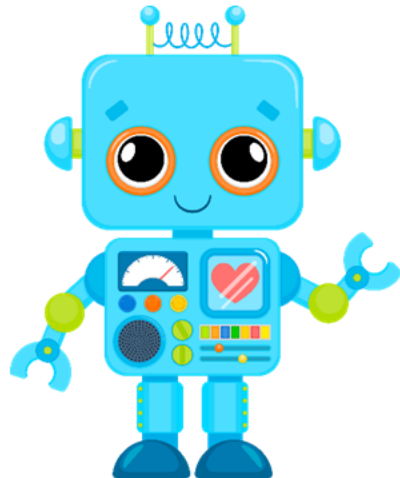
car

Place a peg on the picture that rhymes with jar.

© Fairy Poppins



sky



fly



boat

Place a peg on the picture that rhymes with sky.

© Fairy Poppins